



Arundel Mills Corporate Park



Overview

A 400,000 SF mixed-use office/retail/hotel project across from Arundel Mills Mall. The two 150,000 SF five story office and retail buildings have energy-efficient green building features.

Highlights

- Major users include Greene Turtle, Baltimore Washington Medical, Marriott Spring Hill Suites and The Goddard School
- Joint venture between Linden Associates, Holland Properties and JPB Enterprises



(410) 532-6250 / www.linden-assoc.com



Arundel Mills Corporate Park

ENVIRONS

- Parking (Covered & Open)
- Security
- Within Walking Distance to Arundel Mills Mall, Restaurants, Shopping, Grocery Store

SPECIFICATIONS

Size: 400,000 SF office/retail/hotel

Opened: 2004

Architect: RTKL, Inc.

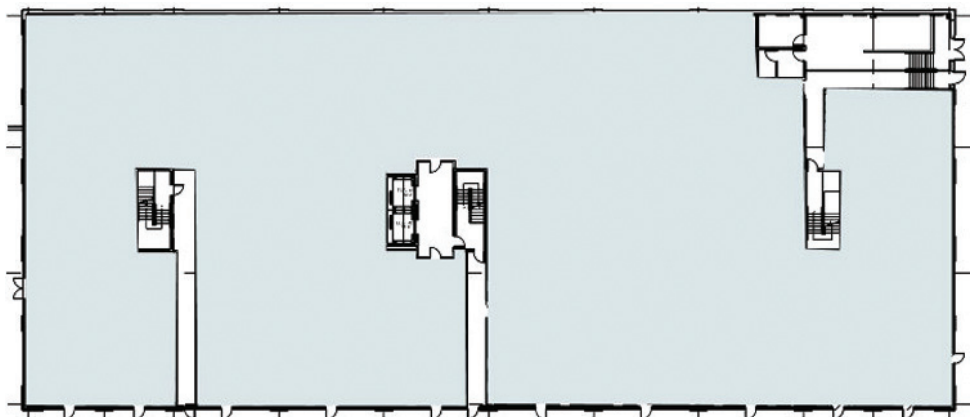
Contractor: Whiting-Turner, Inc.

Availability: Retail – 6000 SF

Arundel Mills Road & Route 100
Hanover, Maryland 21076



7550 Teague Road / Available 6000 SF



7556 Teague Road / Fully Leased

Contact Information

Chris Kurz, President
Linden Associates, Inc.
cwkurz@linden-assoc.com
tel: (410) 532-6250

Mike Kalinock
JPB Enterprises, Inc.
tel: (410) 884-1960

