

ARUNDEL MILLS CORPORATE PARK

HANOVER,
MARYLAND
Arundel Mills Blvd &
Route 100



CHRISTOPHER W. KURZ, President
cwkurz@Linden-Assoc.com / (410) 532-6250
www.Linden-Assoc.com



- **LOCATION:** Across Arundel Mills Boulevard from 1.3 million SF Arundel Mills Mall which opened in 2002
- **BUILDINGS:** Two 5-story office buildings with retail on the ground floor developed on 20.2 acres
- **HIGHLIGHTS:** The Greene Turtle restaurant opened recently
 - Marriott Spring Hill Suites and Goddard School on premises
 - Joint venture between Linden Associates, Holland Properties and JPB Enterprises

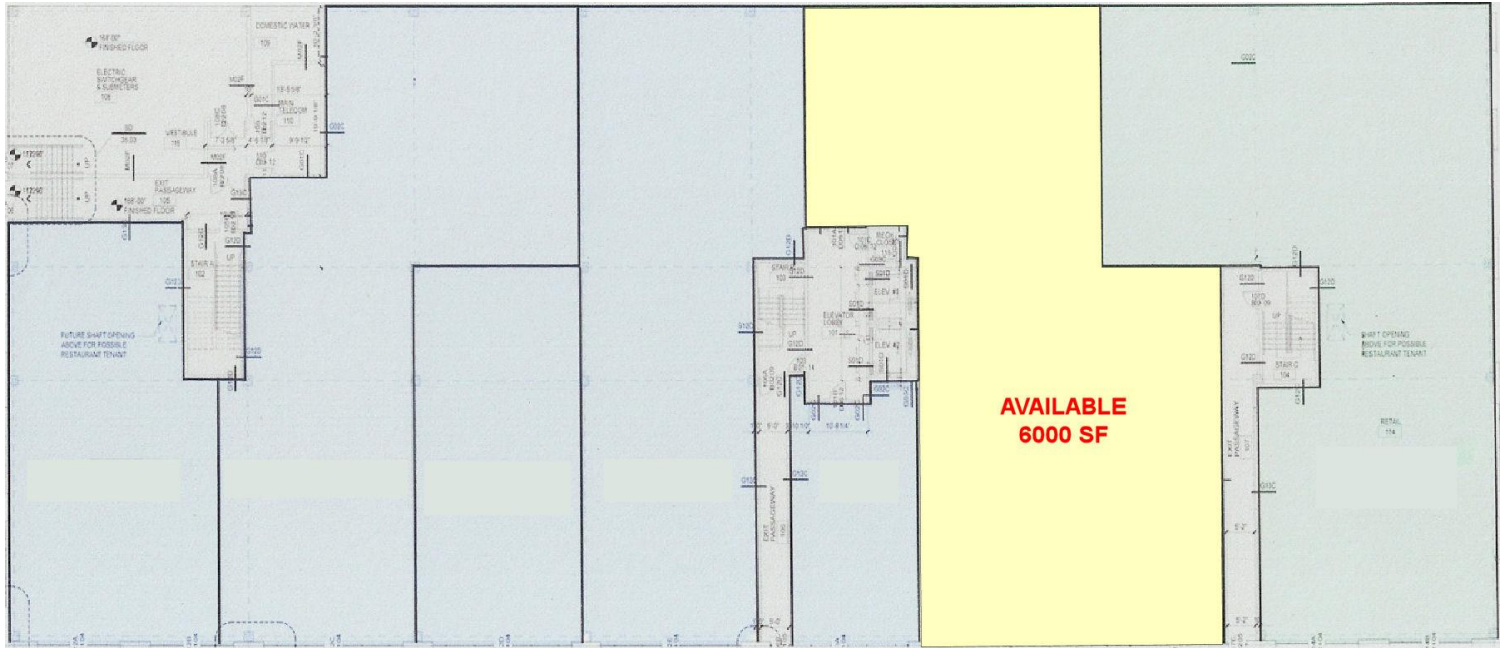
For more information, contact:

Linden Associates, Inc.:
Chris Kurz(410) 532-6250

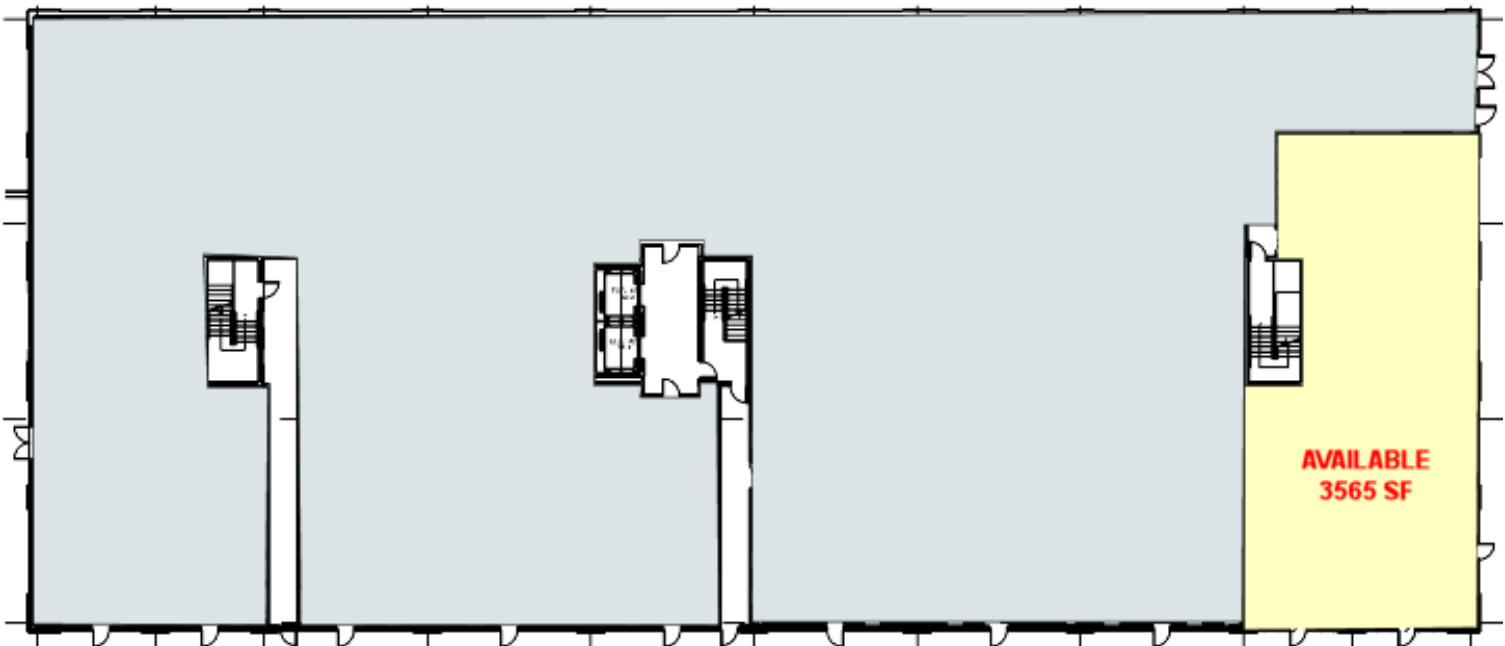
JPB Enterprises, Inc.:
Mike Kalinock..... (410) 884-1960

ARUNDEL MILLS CORPORATE PARK

Retail – 1st Floor Plans



7550 Teague Road



7556 Teague Road